



General Catalogue



Company Introduction

Group was founded in 1995, the headquarter is located in Ningbo, China. Our group specialize in automatic door operators, hospital doors, medical protective equipments and access control systems. We are high-tech enterprise which integrate R&D, manufacturing, sales and after-sales service.

Group enjoys rich technical resources, own a number of independent core technologies and exchanged cooperation technicals with Europe and America. By communicating and learning with European countries, introducing advanced equipments, we produced our own typical automatic door operators, hospital doors and access control systems. Our products share many features, such as high quality, low noise, stable performance, convenient installation and high safety.

After 10 years of development, Group owns three series of products:

1. Automatic sliding door operators, interior door operators,

telescopic door operators, automatic swing door operators, Emergency evacuation automatic doors,arch door operators and Folding door etc.;

2. Automatic hospital doors, radiation-proof doors, access doors, manual hospital doors, swing hospital doors, Medical protective equipment door and pharmaceutical industrial doors.

3. Access control systems.

We have been certified by ISO9001 and CE. Our products are widely used in hotels, banks, airports, commercial buildings, hospitals and factories. Mbsafe brand products enjoy high reputation in domestic market, such as hospital engineering, cleaning and building fields. products are widely exported to Europe, Middle east, Southeast asia and other countries. More and more customers accept our products, believe our products and fall in love with our products.

2014/15

Contents

02/03

International Approvals

23

Automatic Swing Doors

04/05

Medical Characteristics

24/25

Industrial Automatic Doors Features

06/12

Operation Room Door Series
Automatic Hermetic Doors
Air Medical Automatic Door
Senior Medical Automatic doors
Automatic Sliding Doors

26/27

Single Open Automatic Doors
Double Open Automatic Doors

13/15

Channel Door Series
Automatic Folding Doors
Emergency Evacuation Automatic Doors

28

Automatic Single Swing Door

16/18

X-Ray Shielding Door Series
Light X-ray Shielding Automatic Doors
Heavy X-Ray Shielding Automatic Doors

30/31

Special Door Series
Automatic Door Air Shower Room
Train Medical Automatic Door

19/20

Bed-Ward Door Series
Translational Glass Closed Automatic Door

32/33

Mbsafe Medical Parts Overview

21/22

Manualg Doors

INTERNATIONAL APPROVALS



The development of strong technical system

Recognized by the national high-tech enterprises, continue to rely on Germany to introduce advanced technology and management experience, closely track the international medical scientific thoughts, gather with professional knowledge, well-trained, skilled engineering and technical personnel groups, to ensure we can on time, quality, and quantity to meet the client's individual needs. The R & D team always adhere to innovation as the forerunner to the forward thinking, has a number of national patents, has repeatedly won the new product award of progress of science and technology, maintain professional sensitivity, leading the domestic automatic door industry standard for innovation pace.

Solid scale production system

Has more than 30 years of professional experience deep comply with the world development trend, the company in succession from global to introduce first-class native machinery, electronics manufacturing equipment, carry out industrial intelligent automation operation, in order to ensure product quality, such as Cologne Granville lead-free wave soldering, reflow semi-automatic printing presses, Japan placement machine, laser cutting machine, CNC water cutting machine, aluminum profiles of double saw, CNC bending / CNC cutting plate machine, NC / CNC slot aluminum cutting machine, hydraulic shears, the United States, Tektronix ophthalmoscope multimeter, fluke, foaming platform, universal milling machine etc.. And built a number of automatic assembly line, as product manufacturing solid guarantee.

Reliable quality assurance system

Medical door after more than a hundred procedure of production and strict load operation, high temperature aging detection means, through the ISO9001:2008 quality system certification, CE certification, TÜV certification. The quality of our system in product design, material purchase, production, testing, delivery and services have reached the internationally accepted standard. It effectively guaranteed the product of high quality output.

Perfect after sale service system

According to ISO9000 MIS implementation of the quality assurance system, installation and service process, designated professional logistics services security, fast, sound management system and professional norms of customer service team to promptly and effectively for customer to provide global technical support and response, solve product customer service is any question. The establishment of long-term customer files, tracking the user product running state, and provide corresponding guidance and services.



Automatic Hermetic Doors

Medical Door • Operation Room Door | 07



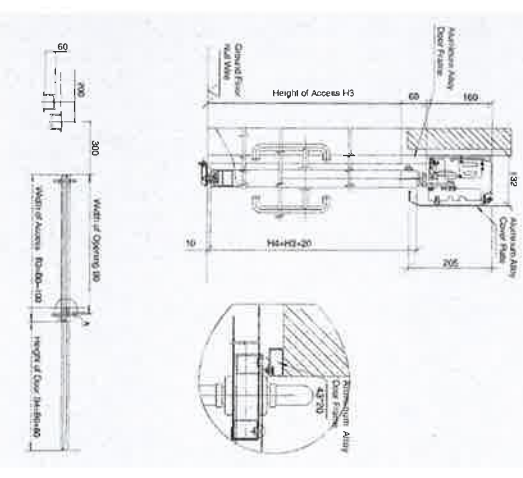
Product Features

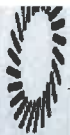
- The on-wall power beam and door could be directly suspended on the wall, so it could be easily installed in a short time, the built-in power beam is on the same level with the wall when the installation is completed, so it shows a decent appearance and integrity.
- The company high-tech patent is used in this design, so sealing performs well to avoid cross contamination and maximally improve its performance of cleanliness, its air-tightness complies with the eighth level (the highest level) of national standards (GB/T1706-2008).
- Unique handle design makes the starting force smaller when the power fails.
- Environmentally Friendly and Energy-Saving: The door, solid and thick, could open quickly, air-flow is reduced to the minimal level so as to avoid the cold wind and dust going into the places which have a requirement for cleanliness, therefore, the constant temperature and moisture could be kept.
- Human-centered design (No Barrier) guarantees the safe access of patients and carts as well as its easy use to maximize its convenience.

Technical Parameters

Door weight	Maximum 150kg
Door width	DW=1070mm~1570mm
Clear opening width	W=2350mm~3350mm
Opening speed	250mm~550mm/s (Adjustable)
Closing speed	250mm~550mm/s (Adjustable)
Delay for opening	2~20s (Adjustable)
Clearance F	> 70N
Manual thrust	> 100N
Power consumption	< 150W

Installation Structure





Operation Room Door Series

Air Medical Automatic Door



Product Features

- A brush DC motor imported from Germany with original packaging is used and such a motor is featured by long service life, high efficiency and free maintenance.
- The power beam and door are directly suspended on the wall, so it could be easily installed in a short time.
- It is featured by its unique closed-type operation structure of the airtight door as well as the compact technology. Its airtightness complies with the eighth level (the highest level) of national standards (GB/T 7105-2009).
- It owns a unique way to sink, so it sinks more than common airtight doors to increase its airtightness.
- Its overall operation is fast and silent, and the exterior and interior soundproof effects are favorable.
- Environmentally Friendly and Energy-Saving: The door, solid and thick, could open quickly, airflow is reduced to the minimal level so as to avoid the cold wind and dust going into the places which have a requirement for cleanliness; therefore, the constant temperature and moisture could be kept.

Technical Parameters

Door weight	Maximum 150kg
Door width	DW=1070mm~1570mm
Chair opening width	W=2350mm~3350mm
Opening speed	250mm~550mm/s (Adjustable)
Closing speed	250mm~550mm/s (Adjustable)
Delay for opening	2~20s (Adjustable)
Closed force F	> 70N
Manual thrust	> 100N
Power consumption	< 150W



Senior Medical automatic doors



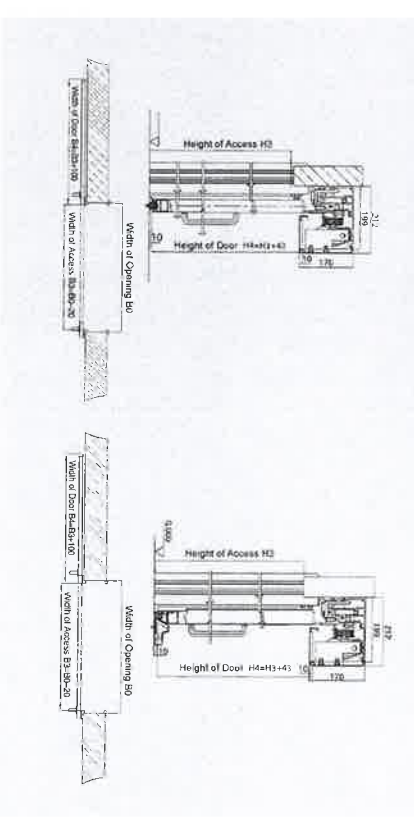
Technical Parameters

Horizontal rail type	Single door	Double doors
Door leaf weight	≈ 200kg	≈ 150-250kg
Width of the door leaf	700-2000mm	600-1800mm
Controller	High-performance micro-controller	High-performance micro-controller
Motor	DC 24V 100W brushless motor	DC 24V 100W brushless motor
Spindle speed	≈ 400mm / s (adjustable)	≈ 400mm / s (adjustable)
Cleaning speed	≈ 300mm / s (adjustable)	≈ 300mm / s (adjustable)
Roller gear type	0.5-11% (adjustable)	0.5-10% (adjustable)
Manual thrust	≈ 50N	≈ 50N
Open direction	Optional	Optional
Power supply voltage	AC85V-AC250V 50Hz-60Hz	AC85V-AC250V 50Hz-60Hz
The use of temperature	-30-50° C	-30-50° C
The use of humidity	35-95% RH (non-condensing)	35-95% RH (non-condensing)
Explosion function	Self-light alarm, alarm reset, fireproof, anti-hack, power power lock, manual control and a variety of lockers control, etc.	35-95% RH (non-condensing)

Product Features

- Door sinking deeper and can reach 10-30mm, sealed better
- The on-wall power beam and door could be directly suspended on the wall, so it could be easily installed in a short time, the built-in power beam is on the same level with the wall when the installation is completed, so it shows a decent appearance and integrity
- The company's high-tech patent is used in this design, so sealing performs well to avoid cross-contamination and maximally improve its performance of cleanliness, its air-tightness complies with the eighth level (the highest level) of national standards (GB/T17106-2009)
- Unique handle design makes the starting force smaller when the power fails
- Environmentally Friendly and Energy-Saving: The door, solid and thick, could open quickly, airflow is reduced to the minimal level so as to avoid the cold wind and dust going into the places which have a requirement for cleanliness, therefore, the constant temperature and moisture could be kept
- Human-centered design (No Barrier) guarantees the safe access of patients and carts as well as its easy use to maximize its convenience.

Installation Structure



Automatic Sliding Doors



Product Features

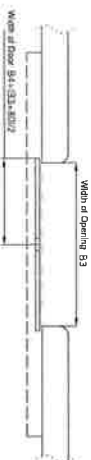
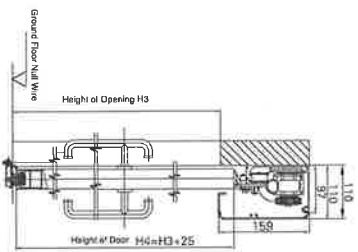
On-wall type/Built-in type:

- The on-wall power beam and door could be directly suspended on the wall, so it could be easily installed in a short time; the built-in power beam is on the same level with the wall when the installation is completed, so it shows a decent appearance and integrity
- The control system is designed definitely according to the sanitary requirements for the medical electrical system. And several control methods could be adopted as required by the exact hospital, and it will have no magnetic interference with other equipments in the same environment.
- The door is equipped with a safety sensor, which could automatically detect the obstruction in the middle of the door, and its anti-pinch device could keep the door open so that pedestrians or equipments could be surely safe.

Technical Parameters

Opening speed	250mm~550mm/s(Adjustable)
Closing speed	250mm~550mm/s(Adjustable)
Delay for opening (closed after F)	2~20s(Adjustable)
Manual thrust F	>70N
Manual thrust	<100N
Power consumption	<150W

Installation Structure



Automatic Folding Doors



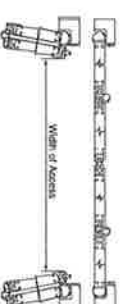
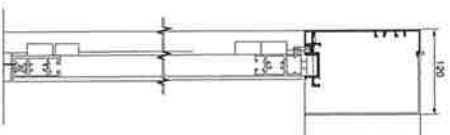
Product Features

- As to the places where the space for exiting and entering is limited, the space utilization rate reaches the highest.
- Its sectional materials and power beam are installed with a seal strip, which could satisfy the sanitary requirements of the hospital, nursing station, cleaning plant, etc.
- Many control methods could be selected according to the customers' requirements such as infrared/microwave sensor, card access system, etc.
- Its overall operation is stable.
- It could have an aluminum alloy frame complete with a large glass panel to strengthen the lighting and airflow.

Technical Parameters

Opening Pattern	Four Panels
Advanced Opening Speed	100~2000mm
Weight of Panel	Maximum 37.5kg of Single Panel
Height of Door	Standard Height: 2000~2300mm
Opening Space	Adjustable
Opening Speed	Adjustable
Delay for Opening (closed after Opening)	1~20s after stop (adjustable)
Manual	50kg
Overall Power Consumption	<30W

Installation Structure



Emergency Evacuation Automatic Doors



Technical Parameters

Opening speed	250mm/s(Adjustable)
Closing speed	250mm/s(Adjustable)
Delay for opening	2~20s(Adjustable)
Closed force F	>70N
Manual thrust	<100N
Power consumption	<150W

Product Features

- It could be used to escape from the access in the case of an emergency. When an emergency happens at the exit where many pedestrians pass by, it could open as a swing door at anytime of its operation to guarantee that the space of exits and entrances are maximized
- Its overall operation is fast and silent
- When it encounters resistance during its operation, the door will automatically rebound to guarantee safe use



Channel Door Series



X-Ray Shielding Door Series

Light X-ray Shielding Automatic Doors

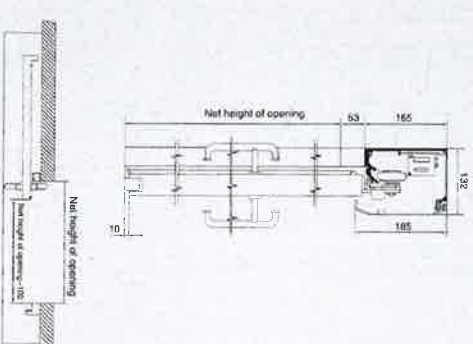
Technical Parameters

Opening speed	250mm/s (Adjustable)
Closing speed	250mm/s (Adjustable)
Delay for opening	2~20s(Adjustable)
Closed force F	>70N
Manual thrust	<100N
Power consumption	<150W

Product Features

- It is lined with a lead plate with the lead content of 1.2mmPb lead glass, which could shield X-ray and avoid bodily injuries caused by the leaking of many harmful rays. It passes the medical test of radiation protection and nuclear safety (taken by Chinese Center for Disease Control and Prevention).
- Its sectional materials and power beam are installed with a seal strip, which could satisfy the sanitary requirements of the hospital, nursing station, cleaning hall, etc.
- The control system is designed definitely according to the safety requirements for the medical electrical system. And several control methods could be adopted as required by the hospital, and it will have no magnetic interference with other equipments in the same environment.
- The sliding or straight automatic door could be used as a carrier.

Installation Structure



Heavy X-Ray Shielding Automatic Doors



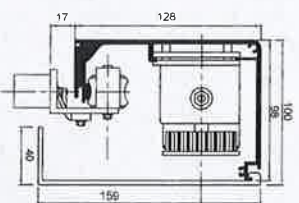
Product Features

- It is lined with a lead plate with the lead content of 1.6mPb lead glass, which could shield X-ray and avoid bodily injuries caused by the leaking of many harmful rays. It passes the medical test of radiation protection and nuclear safety taken by Chinese Center for Disease Control and Prevention.
- Its sectional materials and power beam are installed with a seal strip, which could satisfy the sanitary requirements of the hospital, nursing station, cleaning plant, etc.
- The control system is designed specially according to the safety requirements for the medical electrical system. And several control methods could be adopted as required by the hospital, and it will have no magnetic interference with other equipments in the same environment.
- The sliding or air-tight automatic door could be used as a carrier.

Technical Parameters

Opening speed	250mm~550mm/Adjustable
Closing speed	250mm~500mm/Adjustable
Delay for opening	2~20s/Adjustable
Closed force F	> 70N
Manual thrust	< 100N
Power consumption	< 150W

Installation Structure



Bed-Ward Door Series



Translational Glass Closed Automatic Door

Product Features

- It uses a large piece of high-strength Van Glass as the panel exteriorly framed with stainless steel materials
- Its overall operation is fast and silent
- It could be suitably used in ICU, advanced nursing wards, laboratories, etc. where there is a low level of pedestrian traffic and the environment should be kept quiet
- Many control methods could be selected according to the customer's exact features such as infrared sensing, foot sensing, password input, etc.

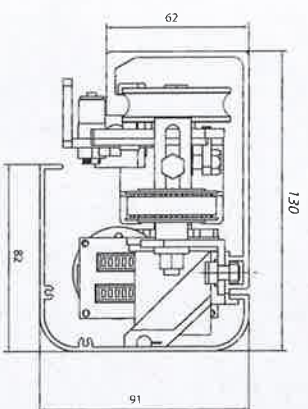
Technical Parameters

Opening speed	250mm-550mm/s(Adjustable)
Closing speed	250mm-550mm/s(Adjustable)
Delay for opening (closed force I)	2-20s(Adjustable)
Manual thrust	>70N
Power consumption	<100N <150W



Manualg Doors

Installation Structure



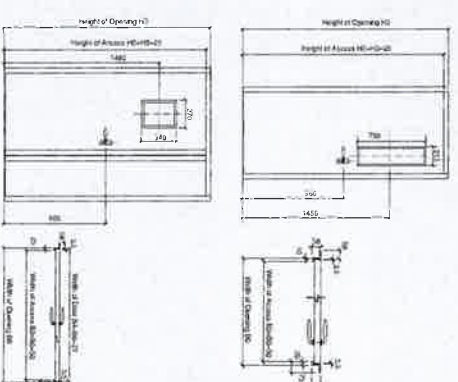
Product Features

- The door, whose molding is designed by a professional team, has various patterns, which could satisfy customers' personalized requirements. It could be suitably used as a waste door or in wards, auxiliary rooms and offices, etc.
- The door opening edge could be covered complete with a high-strength and wear-resistant seal strip in many patterns, so the requirements for cleaning could be satisfied.
- The environmentally friendly aluminum alloy frame filling and aluminum honeycomb filling could be adopted for the door while a steel door could also be selected. At its bottom could be installed a surthen seal strip.
- The door lock, door closer and ground spring among many other accessories could be attached for use according to the customer's requirements.
- It is exclusively manufactured. Its service life significantly increases, because the product quality is guaranteed in terms of source materials, production techniques and hardware fittings.
- Quality hardware fittings are used, so it is of door elegant appearance and use.

Technical Parameters

Door weight	Maximum : 150kg 150kg
Door width	1200mm
Door height	Standard height: 2100mm
Opening angle	0° ~ 110°

Installation Structure



Translation Manual Door/Flat Manual Door (Double)



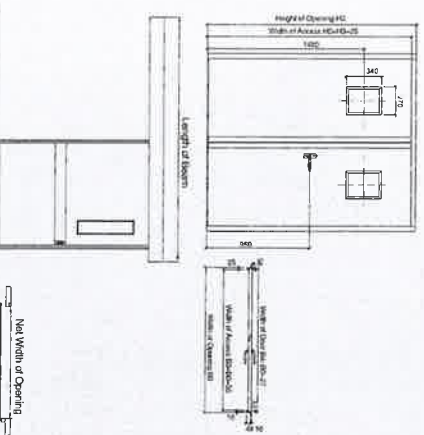
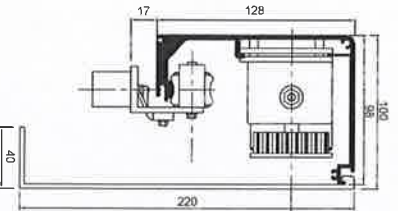
Product Features

- The door, whose modeling is designed by a professional team, has various patterns, which could satisfy customers' personalized requirements. It could be suitably used as a waste door or in wards, auxiliary rooms and clinics, etc.
- The door opening edge could be covered complete with a high-strength and wear-resistant seal strip in many patterns, so the requirements for cleaning could be satisfied.
- The environmentally friendly aluminum alloy frame filling and aluminum non-toxic/noise filling could be adopted for the door while a steel door could also be selected. At its bottom could be installed a sunken seal strip.
- The door lock, door closer and ground spring among many other accessories could be attached for use according to the customer's requirements.
- It is equitably manufacturer. Its service life significantly increases, because the product quality is guaranteed in terms of source materials, production techniques and fracture fittings.
- Quality hardware fittings are used, so it is of both elegant appearance and use.

Technical Parameters

Door weight	Maximum : 150kg 150kg
Door width	1200mm
Door height	Standard Height: 2100mm
Opening angle	0° - 170°

Installation Structure



Product Features

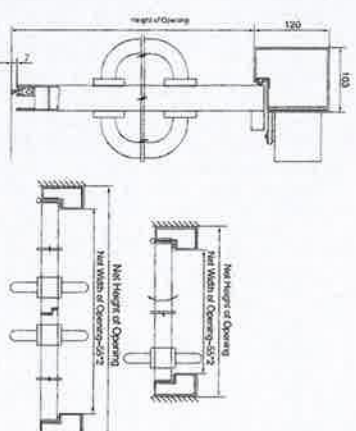
- The door motor system adopts the microcomputer chip to intelligently control its opening and closing, and the door opening angle could be set randomly.
- The door motor is suspended on the wall, so it could be easily installed.
- Many control methods could be selected according to the customers' requirements such as Infrared/microwave sensor, card access system, etc.
- The door is complete with a high-strength aluminum alloy frame lined with environmentally friendly and quality filling materials.
- The door frame seal strip and the sunken seal strip at the bottom of door panel coordinate with each other, which could satisfy the sanitary requirements of the hospital, nursing station, cleaning plant, etc.

Technical Parameters

Opening speed	250mm-550mm/(Adjustable)
Closing speed	250mm-550mm/(Adjustable)
Delay for opening	2-20s/(Adjustable)
Closing force F	>70N
Manual Thrust	<100N
Power consumption	<150W

Automatic Swing Doors

Installation Structure





Industrial Cleaning Door

Industrial Cleaning Door Preferred Brand



Clean and Dust-free

Biopharmaeuropeal company, electronic factories, laboratories and other customized automatic doors provide the highest level of standard airflow (ISO 17106 2008) Section 8 (size suitability) solution to prevent contamination, constant maintain a sterile environment, maximize cleaning performance. Through specific design, choice of door or samples (soft steel surface coating, surface smooth, strong and thick measure wear and corrosion resistance, dust does not produce dust, easy to clean, no threshold, rounded plane embedded in windows, flush-mounted both sides and the semi wall sealing strip, door to the door closed, seals good, door handles modeling simple, precision machining surface treatment, bright, slippery, rapid opening and closing of exclusion will be reduced to a minimum to ensure that the requirements of dustless handling (in air purification, particulate clean performance, electrical junctions of the upper beam and the ceiling into the air sealed to reduce dust accumulation and easy to clean and dry after, no cracks avoid depression and difficult to clean, to prevent contamination from the above space.



Beautiful and Simple

*Industrial Door design beautiful, bright colors. The company that is fully able to communicate in the hospital project started with the hospital, providing a full range of personalized design door type in addition to meet the functional requirements, but also harmonize with the environment color, giving a sense of the area as a whole. Precision production not only guarantee the performance of the product, but also showing the perfect design. some, along product, America will bring industrial doors and a reliable, representative styling atmosphere, concise, easy to operate, clean and maintain, greatly reducing the customer's maintenance costs.



Intelligence and Security

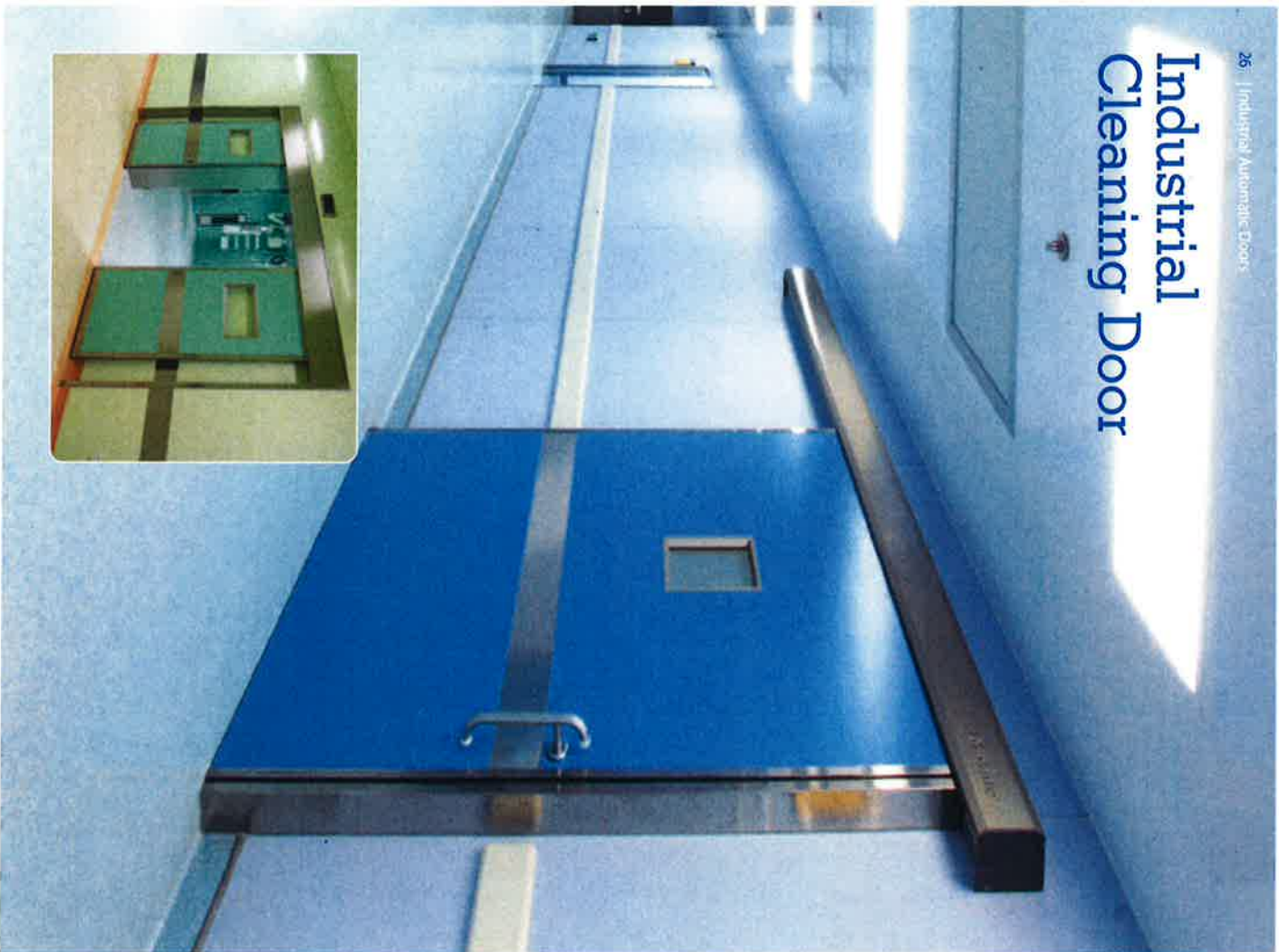
Industrial doors microcomputer intelligent control system to automatically set the control process, quickly open the door so you do not waste time in emergency situations, quickly respond. Drive system by CE and UL certified for use in two kitchen, laboratories, storage and security devices in other regions. Multiple sets of safety sensing device, specific, in difficult automatic bounce function, eliminating the slip human problems, even if it was forced sliding doors, it will not appear program error. Unique handle design, power outages can be easily opened.



Diversity and Reliability

Factory because of its special architectural structure, the challenge lies in building environments facing the system to adapt to different functions of the room concept. MMS industrial doors opened and closed using a variety of start-up and linkage mode. You can manually turn the button can also be used infrared sensors, velocity induction, code input, such as automatic mode is turned on, respond to different places to provide a variety of solutions to meet the individual needs of different customers. At the same time able to solve and supporting each project contractors expect a variety of functions, wall closing edge, doorway wide model, door body style. Advanced power circuit design, can protect a wide range of automatic doors in voltage and stable operation. Lab validation hundreds of thousands of times as well as decades of practical application experience to ensure a smooth and reliable operation of each door type.

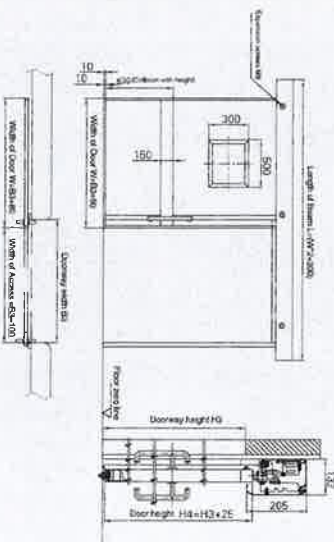
Industrial Cleaning Door



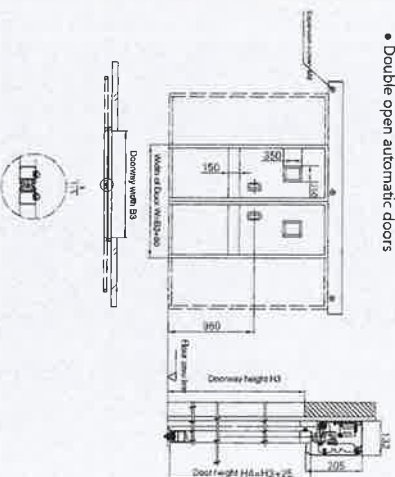
Single Open Automatic Door, Double Open Automatic Doors

Installation Structure

• Single open automatic doors



• Double open automatic doors



Product Features

- Plug-in power beams and exterior door and the wall directly, fast and easy installation, embedded power beam embedded installation, and the wall to keep in the same plane, more beautiful, wealthy overall sense
- The company uses high-tech patented unique design, good sealing performance, prevent cross-contamination, clean maximize performance, airight performance in line with the national standard (GB / T 17106-2008), Section 8 standard (the highest level)
- Unique handle design, the opening force lower power outage
- Overall operation brisk tranquility, good interior and exterior insulation effect
- Energy Saving: door sturdy, thick and fast opening and closing, air circulation is reduced to a minimum, can prevent cold air and dust into the requirements of the place has a clean, maintain constant humidity and constant temperature
- Humane accessible design, in which patients and cars safe passage and ease of use, provide the greatest possible convenience.

Technical Parameters

Leaf weight	Maximum 150kg
Door width	DW=1070mm~1570mm
Clearance structure width	W=2350mm~3350mm
Open running speed	250mm~550mm/s (Adjustable)
Closed-door speed	250mm~550mm/s (Adjustable)
Opening Hours	2~20h (Adjustable)
Closed force F	> 70N
Manual thrust	> 100N
Total power consumption	< 150W

Automatic Single Swing Door



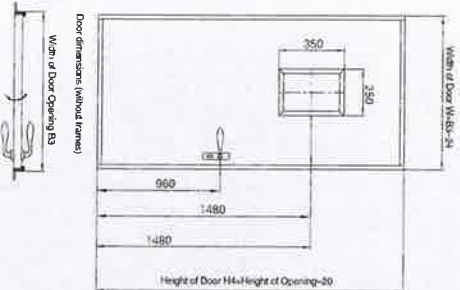
Product Features

- The main products and accessories in full accordance with industrial and pharmaceutical clean room GMP international standards dust, sealing, purification requirements for the design configuration.
- Door frame and the wall in the same plane, the door perimeter with a special high strength and durable sealing strip to meet the purification requirements, simple aesthetic appearance
- Optional aluminum door frame green filling process, aluminum honeycomb filling process and steel door fillet embedded in the plane window, the bottom can be equipped with sunken brush seal strip
- Precision manufacturing, from materials to the production process, metal parts to ensure product quality, product life greatly increased

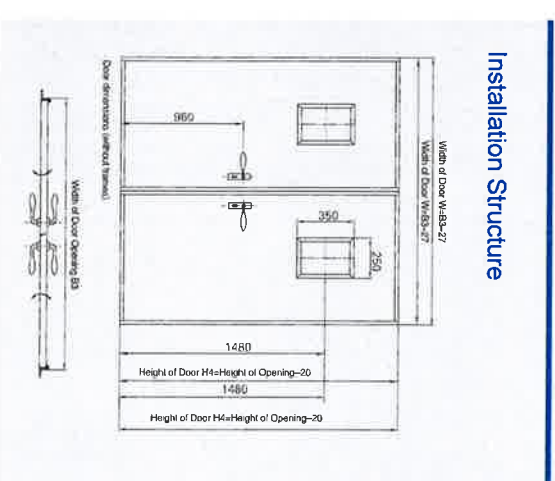
Technical Parameters

Opening speed	250mm~550mm/(Adjustable)
Closing speed	250mm~550mm/(Adjustable)
Delay for opening	2~20s/(Adjustable)
Closed force F	>70N
Manual thrust	<100N
Power consumption	<150W

Installation Structure



Manual Double Swing Door



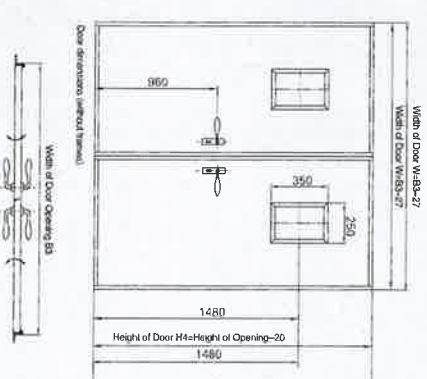
Product Features

- The main products and accessories in full accordance with industrial and pharmaceutical clean room GMP international standards dust, sealing, purification requirements for the design configuration.
- Door frame and the wall in the same plane, the door perimeter with a special high strength and durable sealing strip to meet the purification requirements, simple aesthetic appearance.
- Optional aluminum door frame green filling process, aluminum honeycomb filling process and steel door, fillet embedded in the plane window, the bottom can be equipped with sunken brush seal strip
- Precision manufacturing, from materials to the production process, metal parts to ensure product quality, product life greatly increased

Technical Parameters

Opening speed	250mm~550mm/(Adjustable)
Closing speed	250mm~550mm/(Adjustable)
Delay for opening	2~20s/(Adjustable)
Closed force F	>70N
Manual thrust	<100N
Power consumption	<150W

Installation Structure





Automatic door air shower room



Product Features

- Interlocked Double Door: Only when one door is closed does the system allow the other door to open, so the site requirements for above level cleanliness could be fully guaranteed
- At both sides of the door and along the door joints are seal strips, so the sanitary requirements could be satisfied.
- It has different door opening control modes such as infrared sensing, foot sensing, password input, etc. from which users could select conveniently.

Train medical automatic door



Product Features

- The technique of fixing and installing the upstanding column is specially designed for the medical door, so it could keep normal, stable, safe, and lasting especially when the train jolts during its progress.
- At both sides of the door and the door joint is the seal strip, so the sanitary requirements could be satisfied.
- It has different door opening control modes such as infrared sensing, foot sensing, password input, etc. from which users could select conveniently.